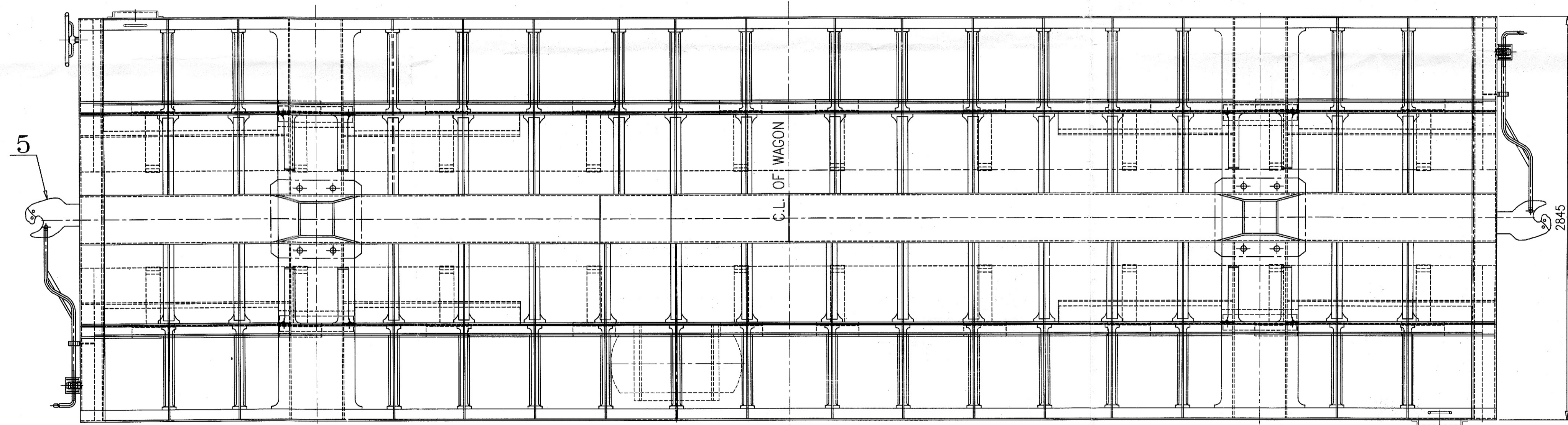
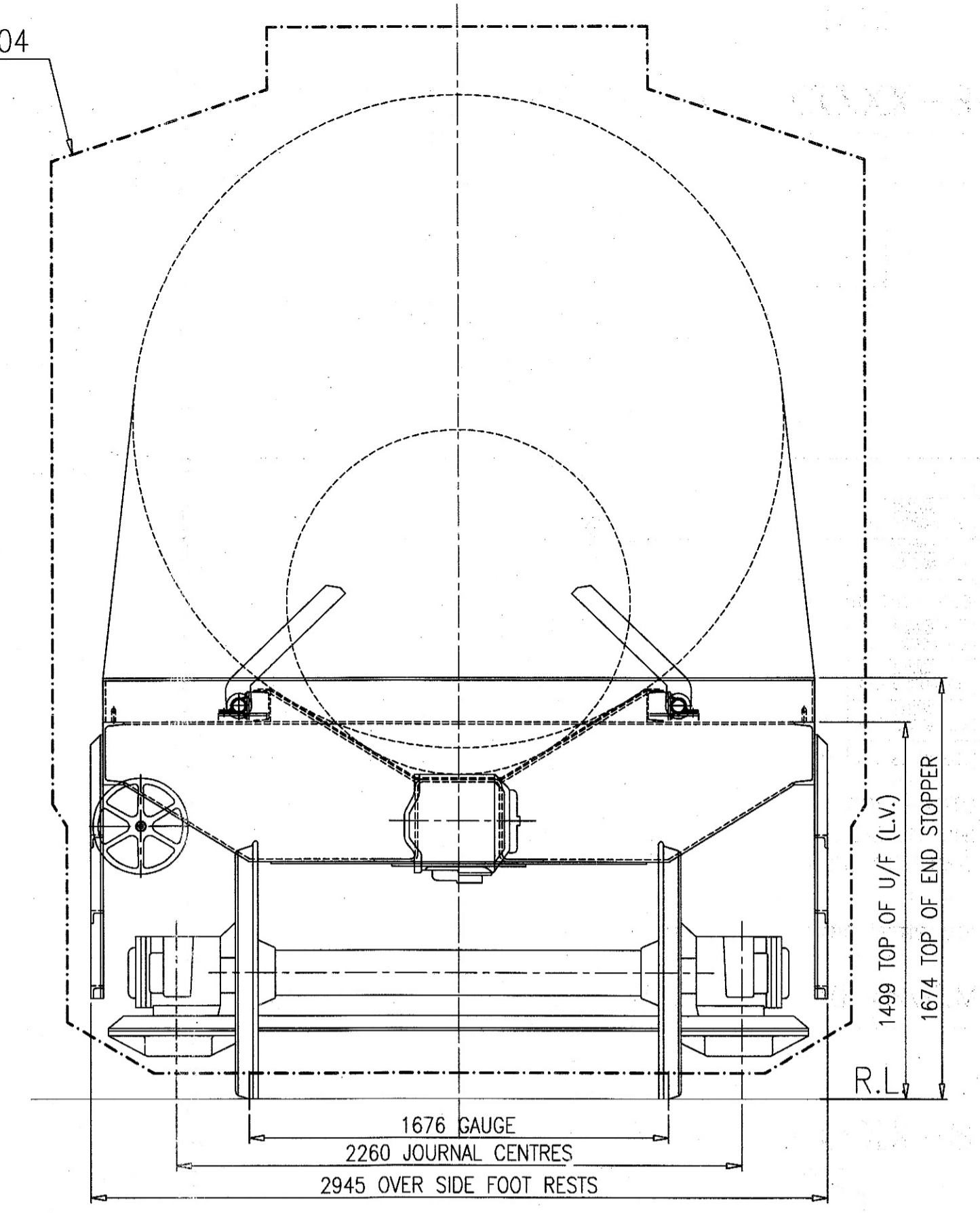
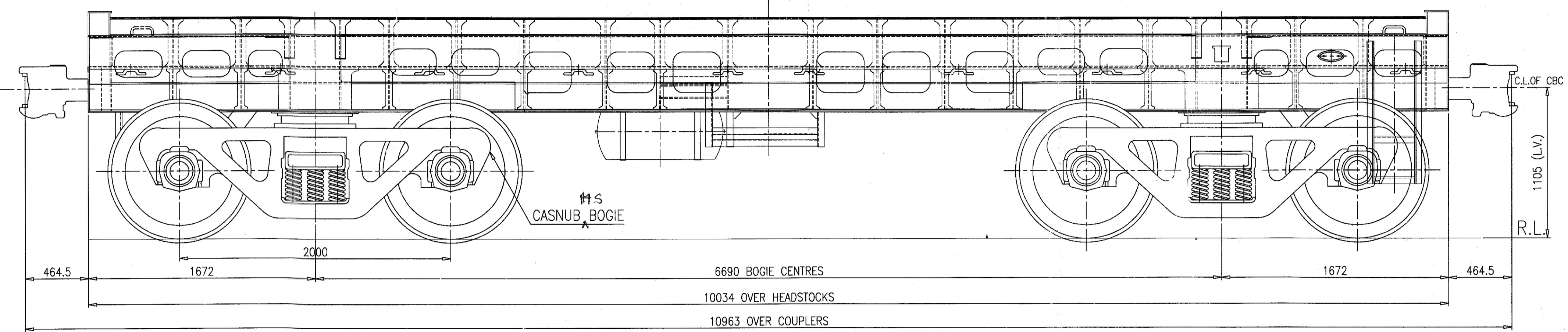


M.M.D. 1D-2004



WAGON DATA		UNDER TARE (mm.)
HEIGHT OF CBC. FROM R.L.		1105
DISTANCE BETWEEN WHEEL FLANGES AND FLOOR		470.5
DISTANCE BETWEEN TOP & BOTTOM SIDE BEARERS		NIL
TOP OF THE SOLE BAR		1499

BOGIE DATA		UNDER TARE (mm.)
HEIGHT OF BOTTOM OF BOGIE FRAME FROM R.L. AT CENTRE		165
DISTANCE FROM R.L. TO TOP OF PIVOT		932
DISTANCE FROM R.L. TO TOP OF BOGIE SIDE BEARER		921
HEIGHT OF SPRINGS		251

SUMMARY OF WEIGHT (ESTIMATED)		TONNES
UNDERFRAME COMPLETE		10.40 t
TWO CENTRE BUFFER COUPLER COMPLETE (NON-TRANSITION) WITH YOKE & TWO DRAFT GEARS		1.32 t
HAND BRAKE GEAR ON U'FRAME AND AIR BRAKE EQUIPMENT INCLUDING PIPING ETC		1.08 t
BOGIE COMPLETE		10.80 t
ESTIMATED TARE		23.6 t
CARRYING CAPACITY		68.0 t
GROSS WEIGHT PER METER RUN OVER COUPLING FACES		8.35 t
RATIO OF CARRYING CAPACITY TO TARE		2.88
GROSS WEIGHT AS PER AXLE LOAD (22.9X4)		91.6 t
RAKE THROUGHPUT		3944 t
NO. OF WAGON PER RAKE		58

NOTE:-

1. THE LOADING SHOULD BE SUCH THAT IN NO CASE THE LOAD ON ANY BOGIE EXCEED THE 22.9t AXLE LOAD

PRELIMINARY SKETCH		ONLY FOR PROTOTYPE APPLICATION UNDER GUIDANCE OF R.D.S.O. (WAGON)	
SUPERSEDED BY	DATE	BOGIE FLAT STEEL WAGON TYPE 'BFNSM'	
SCALE PASSED		<h1>DIAGRAM</h1>	
1:25 CHECKED			
DRAWN DINESH KUMAR 1/14			
COMPARED			
W.S.NO.			
B.G.	R.D.S.O. [W]	GROUP	WD-14XXX-S-02