

WAGON DIRECTORATE  
R.D.S.O.

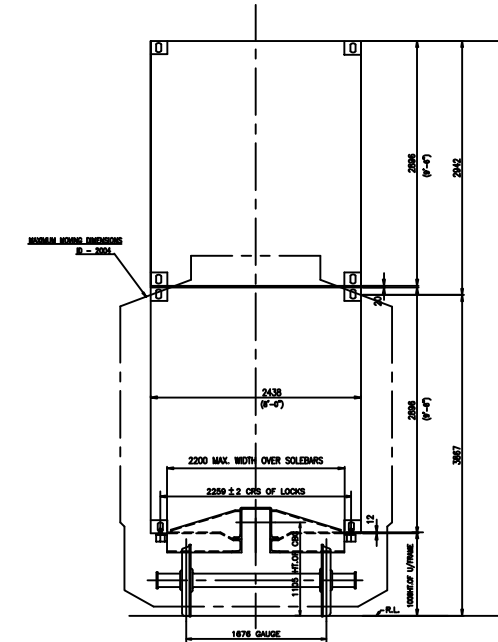
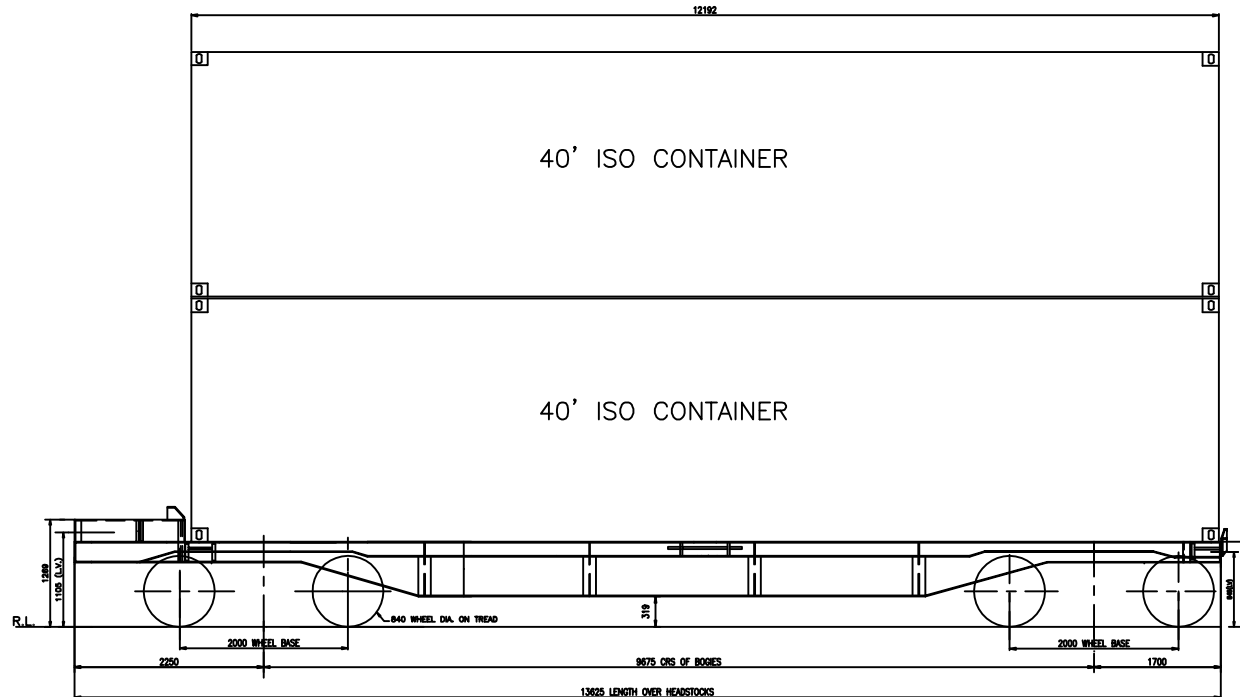
BOGIE CONTAINER FLAT WAGON

OPERATIONAL CODE  
'BLCAM'

GAUGE-B.G.

D I A G R A M

TYPE OF WAGON CODE  
---



SPECIAL FEATURES

Suitable for carrying 20' & 40' long ISO containers in various combination for carrying enhanced pay load. However 20' are always placed in bottom stack and gross load of top container has been restricted to maintain c.g. limits.

Wt. OF ASSEMBLY SUB-COMPONENT

Wt. of U'frame ..... 6.164 t.  
Wt. of slackless draw bar & C.B.C. .... 1.26 t.  
Wt. of brake gear on underframe ..... 1.1 t.

SPEED CERTIFICATE NO:-  
MW/SPD/BG/DOUBLE STACK/22t Dt. 12.11.2007  
AMENDEMENT NO. Dt. 16.01.2008

REFERENCE:-  
DRAWING NO:- CONTR.-07072-S/1



**STANDARD FEATURES OF 'BLCAM' WAGON**

S.No.	PARTICULARS	BLCAM
1.	Length over head stock (mm)	13625
2.	Length over couplers (mm)	14566
3.	Length inside (mm)	-
4.	Width over Headstock/Width over Bolster (mm)	2100/2200
5.	Height inside/Height(max.)from R.L.	1269/1009
6.	Bogie centers (mm)	9675
7.	Journal length × dia. (mm)	144x278
8.	Journal centers (mm)	2260
9.	Wheel dia. on tread (New/Worn) (mm)	840/780
10.	Height of C.B.C./S.D.B. from R.L. (mm)	1105/845
11.	C.G. from R.L. (empty) (m)	0.551
12.	C.G. from R.L. (loaded) (m)	2.66
13.	Floor area (Sq.M)	-
14.	Cubic Capacity (Cu.M)	-
15.	Maximum axle load (tonne)	22
16.	Tare Weight (tonne)	19.1
17.	Pay load (tonne)	68.9
18.	Gross load (Pay+Tare) (tonne)	88
19.	Ratio gross load/Tare	4.61
20.	Ratio (Pay load to tare)	3.61
21.	Track Loading density (tonnes/meter)	6.04
22.	No. of wagons per train of 45 wagons	18
23.	Brake System	Air Brake
24.	Coupler	C.B.C./S.D.B
25.	Bearing	R.B.
26.	Maximum Speed (Loaded) (Empty)	100 kmph 90 kmph

**INTRODUCTION TO BLCAM WAGON :**

Modified BLC wagons for carrying enhanced pay load has been coded as BLCM. These wagons are suitable for carrying 20` & 40` long containers. Load in top container has been restricted to maintain C.G. restrictions.

BLCAM wagons have been fitted with Miner-Sujan make side bearers, new friction wedges and one additional inner spring per nest for DSC operation with axle load of 22t.