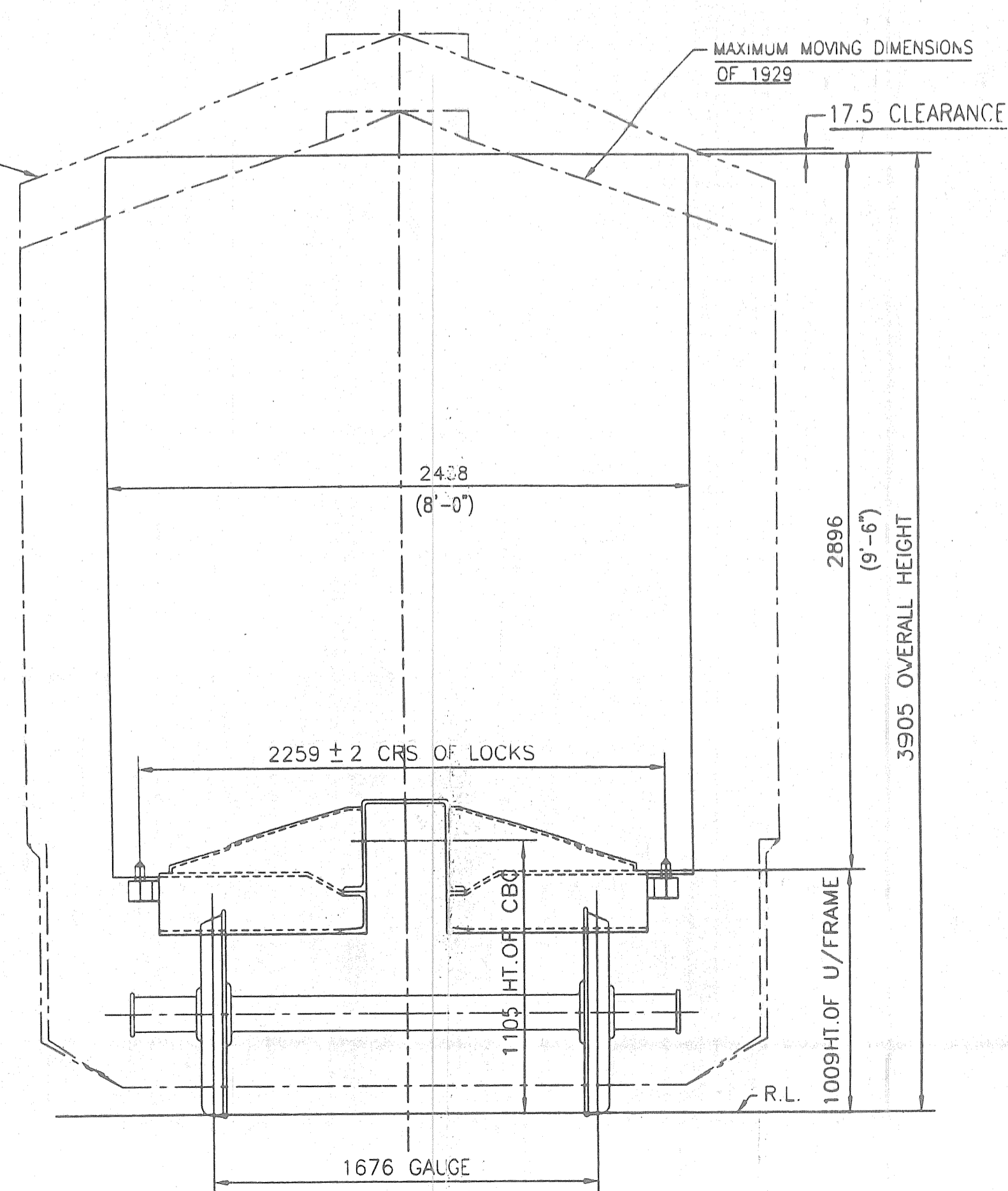


MAXIMUM MOVING DIMENSIONS OF EXISTING STANDARD 'X' CLASS ENGINE



S. NO.	SUMMARY OF WEIGHTS (ESTIMATED)	MEASURES
1.	UNDERFRAME	6.164 t
2.	BRAKE GEAR ON UNDERFRAME	1.1 t
3.	COUPLING ONE END CBC & SDB ON OTHER END	1.26 t
4.	BOGIE COMPLETE EXCEPT SPRING, WHEELS & AXLES, CARTRIDGE BEARING WITH ADAPTERS AND CENTRE PIVOTS	4.89 t
5.	FOUR PAIRS OF WHEELS & AXLES	4.432 t
6.	EIGHT CARTRIDGE BEARING UNITS AND ADAPTERS	0.467 t
7.	BOLSTER SPRINGS AND SNUBBER SPRINGS	0.368 t
8.	ESTIMATED TARE	19.1 t
9.	PAY LOAD	61 t
10.	GROSS LOAD	80.1 t
11.	AXLE LOAD (DESIGNED)	20.32 t
12.	RATIO (PAY LOAD TO TARE)	3.2 t
13.	TRACK LOADING DENSITY (GROSS)	5.5 t/m.
14.	NO. OF WAGONS PER TRAIN OF 45 WAGONS	18
15.	PAY LOAD PER TRAIN (OF 18 A-CARS)	1098 t
16.	GROSS LOAD PER TRAIN (OF 18 A-CARS)	1441.8 t
17.	C.G. FROM R.L. (EMPTY)	0.551 m
18.	C.G. FROM R.L. (LOADED WITH TWO NOS. OF 20' CONTAINERS)	1.993 m

S. NO.	WAGON DATA (HEIGHT)	mm
1.	HEIGHT OF CENTRE BUFFER COUPLER FROM R.L.	1105
2.	HEIGHT OF SLACKLESS DRAW BAR FROM R.L.	645

S. NO.	BOGIE DATA (TARE)	mm
1.	HEIGHT OF BOTTOM BOGIE FRAME FROM R.L. AT CENTRE	149
2.	DISTANCE FROM R.L. TO TOP OF CENTRE PIVOT	715
3.	DISTANCE OF R.L. TO TOP OF SIDE BEARER	775
4.	HEIGHT OF SPRINGS	250
5.	WHEEL DIAMETER ON TREAD	840
6.	WHEEL DIAMETER ON TREAD CONEMNING SIZE	780
7.	DIAMETER OF WHEEL SEAT	213
8.	JOURNAL CENTRES	2260
9.	JOURNAL SIZE	144x278

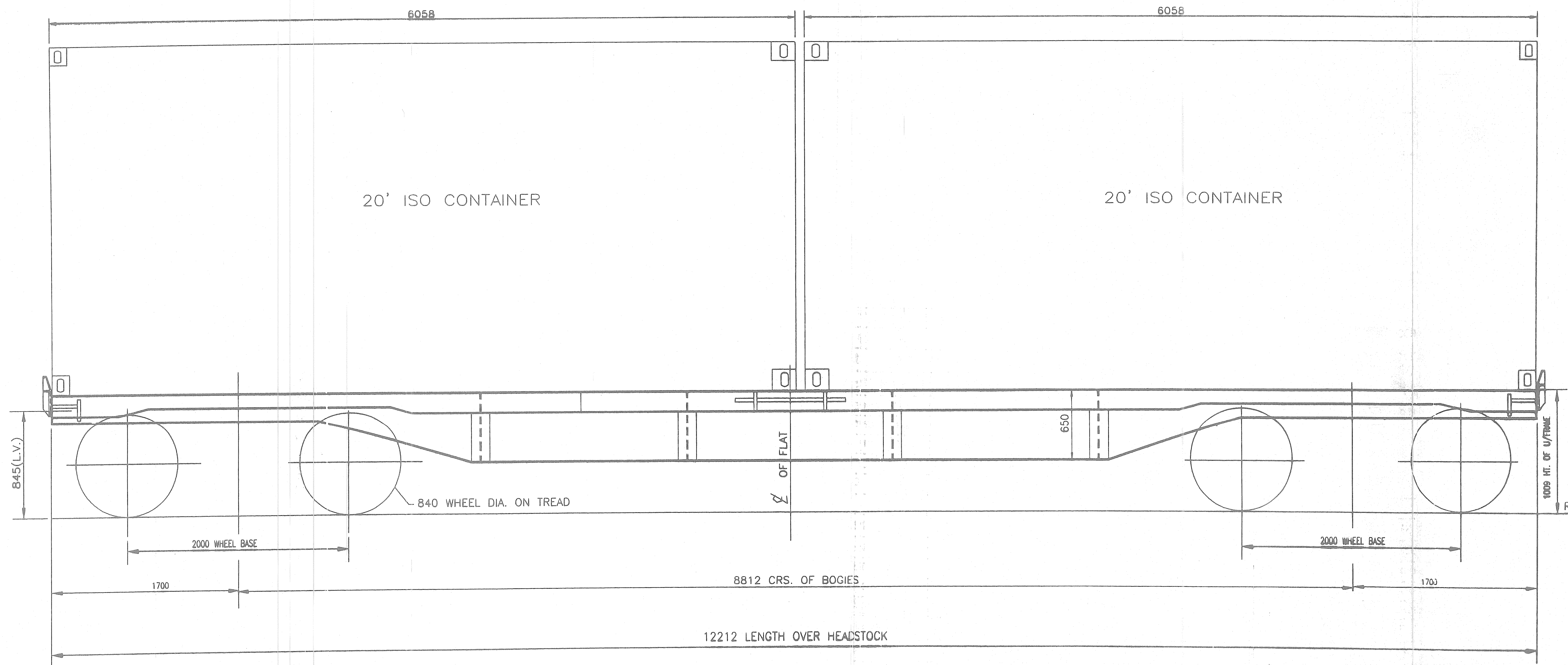
NOTES:-

1. FITTED:-
 - 1.1 WITH SINGLE GRADUATED RELEASE AIR BRAKE
 - 1.2 HIGH TENSILE NON TRANSITION TYPE CENTRE BUFFER COUPLER ON RAISED END AND SLACKLESS DRAW BAR ON OPPOSITE END.
 - 1.3 FOR ARRANGEMENT OF LCCF-20 (C) BOGIES REFER DRG. NO. CONTR-9404-S/2.
 - 1.4 LENGTH OVER COUPLERS - 145.6 mm.

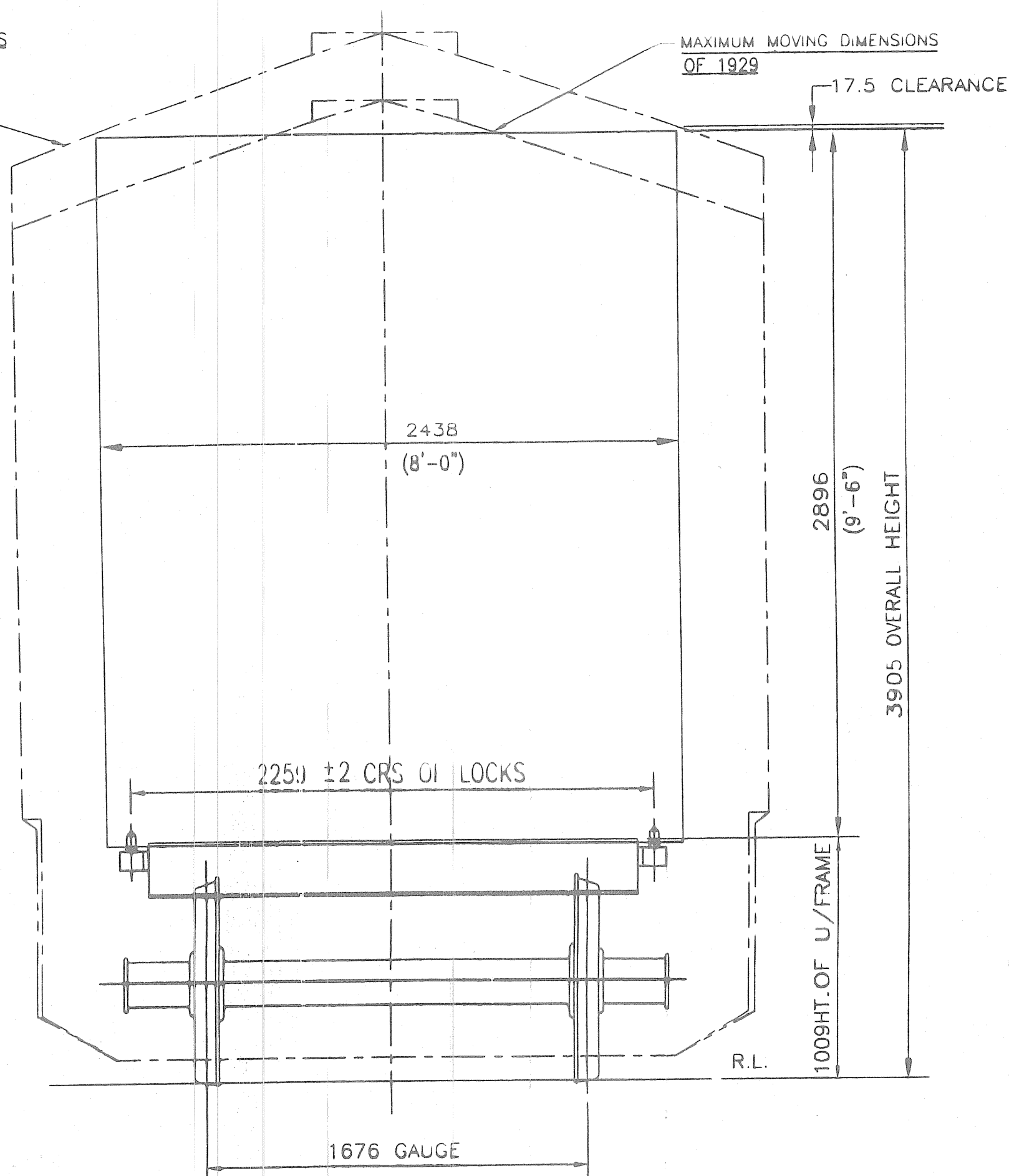
CONTR-06/84	DRAWING REVISED	05/06
CONTR/88/99	REVISED & REDRAWN	8/99
ALT. ITEM	AUTHY.	DESCRIPTION
	CKD.	DATE

ASSEMBLY DRGS	SUPERSEDED BY :	BOGIE CONTAINER FLAT (A-CAR)
REFERENCE :-	SCALE P: -sd- 8/99 C: -sd- 8/99 T: -sd- 8/99 D: -sd- 8/99 J.S.	DIAGRAM WITH TWO 20' OR ONE 40' LONG ISO CONTAINERS
FLOPPY NO. :-	B.G. R.D.S.O. GROUP	CONTR.-9405-S/2





MAXIMUM MOVING DIMENSIONS
OF EXISTING STANDARD 'X' CLASS
ENGINE

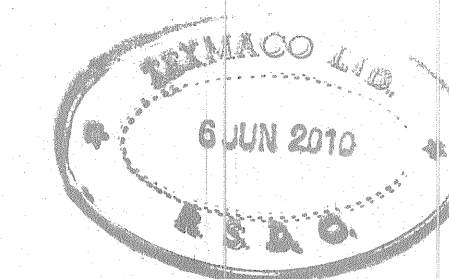


S. NO.	SUMMARY OF WEIGHTS (ESTIMATED)	MEASURES
1.	UNDERFRAME	5.124 t
2.	BRAKE GEAR ON UNDERFRAME	1.1 t
3.	SLACKLESS DRAW BAR	1.2 t
4.	BOGIE COMPLETE EXCEPT SPRING, WHEELS & AXLES, CARTRIDGE BEARING WITH ADAPTERS AND CENTRE PIVOTS	4.89 t
5.	FOUR PAIRS OF WHEELS & AXLES	4.432 t
6.	EIGHT CARTRIDGE BEARING UNITS AND ADAPTERS	0.467 t
7.	BOLSTER SPRINGS AND SNUBBER SPRINGS	0.368 t
8.	ESTIMATED TARE	18 t
9.	PAY LOAD	61 t
10.	GROSS LOAD	79 t
11.	AXLE LOAD (DESIGNED)	20.32 t
12.	RATIO (PAY LOAD TO TARE)	3.39 t
13.	TRACK LOADING DENSITY (GROSS)	6 t/m.
14.	NO. OF WAGONS PER TRAIN OF 45 WAGONS	27 t
15.	PAY LOAD PER TRAIN (OF 27 B-CARS)	1647 t
16.	GROSS LOAD PER TRAIN (OF 27 B-CARS)	2133 t
17.	C.G. FROM R.L. (EMPTY)	0.548 m
18.	C.G. FROM R.L. (LOADED WITH TWO NOS. OF 20' CONTAINERS)	2.013 m

S. NO.	BOGIE DATA (TARE)	mm
1.	HEIGHT OF BOTTOM BOGIE FRAME FROM R.L. AT CENTRE	140
2.	DISTANCE FROM R.L. TO TOP OF CENTRE PIVOT	715
3.	DISTANCE OF R.L. TO TOP OF SIDE BEARER	775
4.	HEIGHT OF SPRINGS	250
5.	WHEEL DIAMETER ON TREAD	840
6.	WHEEL DIAMETER ON TREAD CONDEMNING SIZE	780
7.	DIAMETER OF WHEEL SLAT	213
8.	JOURNAL CENTRES	2260
9.	JOURNAL SIZE	144x278

NOTES:-

- FITTED:-
- WITH SINGLE GRADUATED RELEASE AIR BRAKE
- COUPLING - SLACKLESS DRAW BAR ON BOTH ENDS.
- FOR ARRANGEMENT OF LCCF-20 (C) BOGIES REFER DRG. NO. CONTR-9404-S/2
- LENGTH OVER COUPLERS - 13165 mm.



⑥	CONTR-06034	DRAWING REVISED	5/06
⑤	CONTR-112/90	TITLE BLOCK REVISED	8/99
ALT. ITEM	AUTHY.	DESCRIPTION	CKD. DATE

ASSEMBLY DRGS.	SUPERSEDED BY :	BOGIE CONTAINER FLAT(B-CAR)	
REFERENCE :-	SUPERSEDES :	DIAGRAM	
	SCALE P -ad- 8/99	E.G. R.D.S.O. GROUP	
	C -ad- 8/99		
	D -ad- 8/99		
	J.S.		
FLOPPY NO. :-	C9406S2ALT8-99	CONTR-9406-S/2	