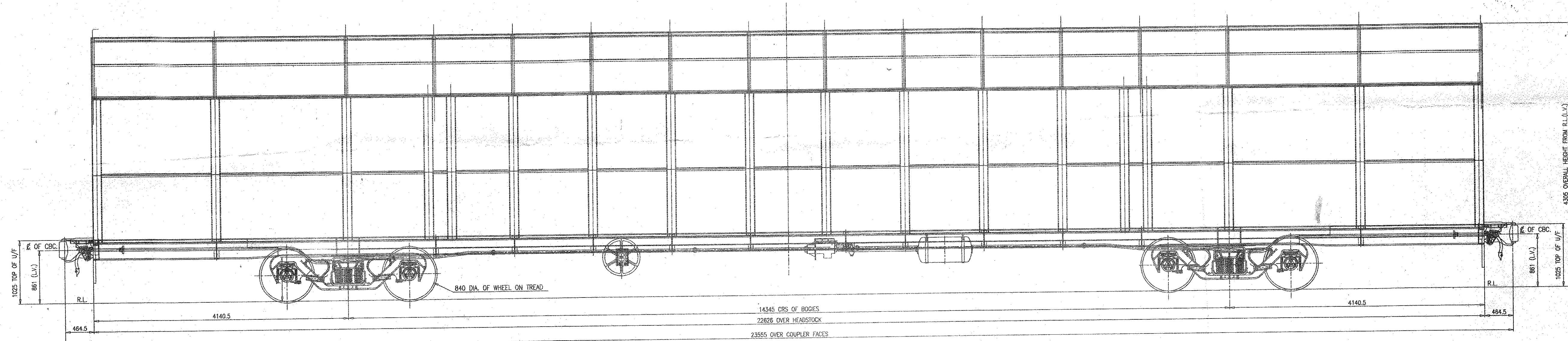
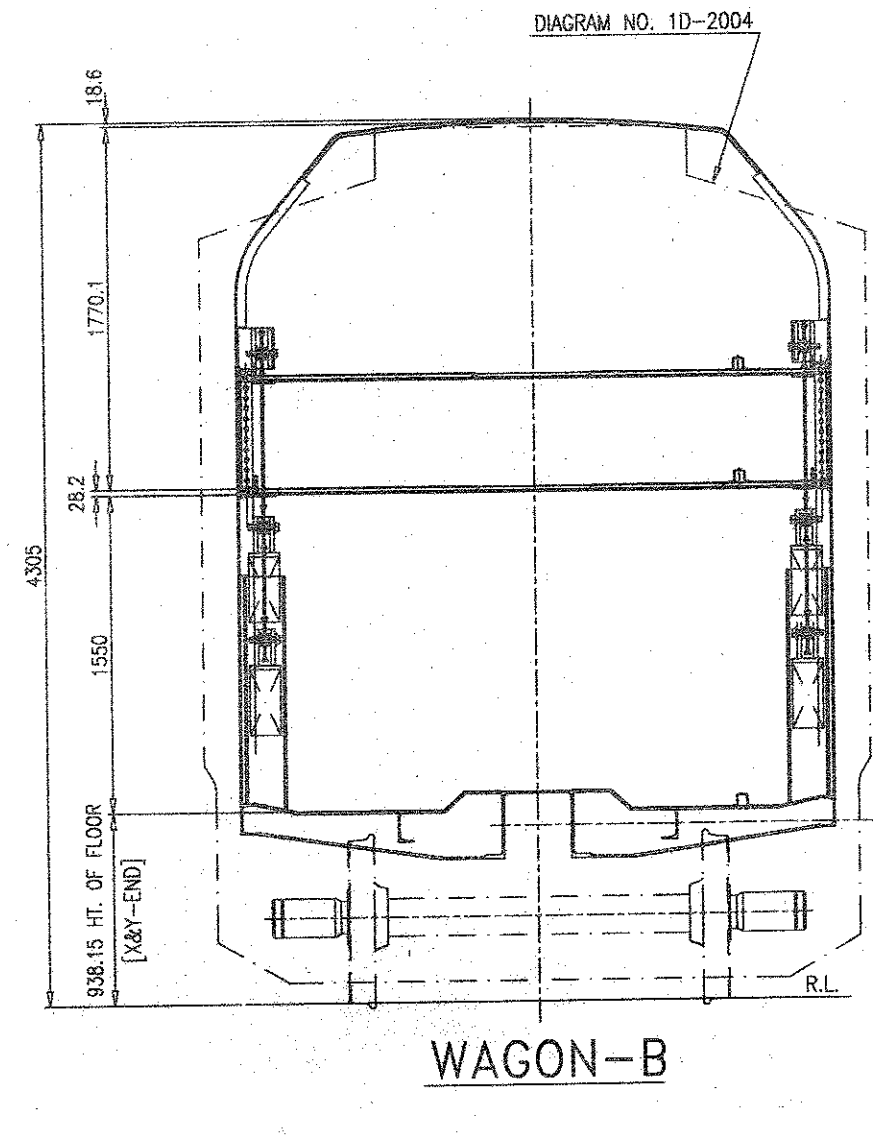
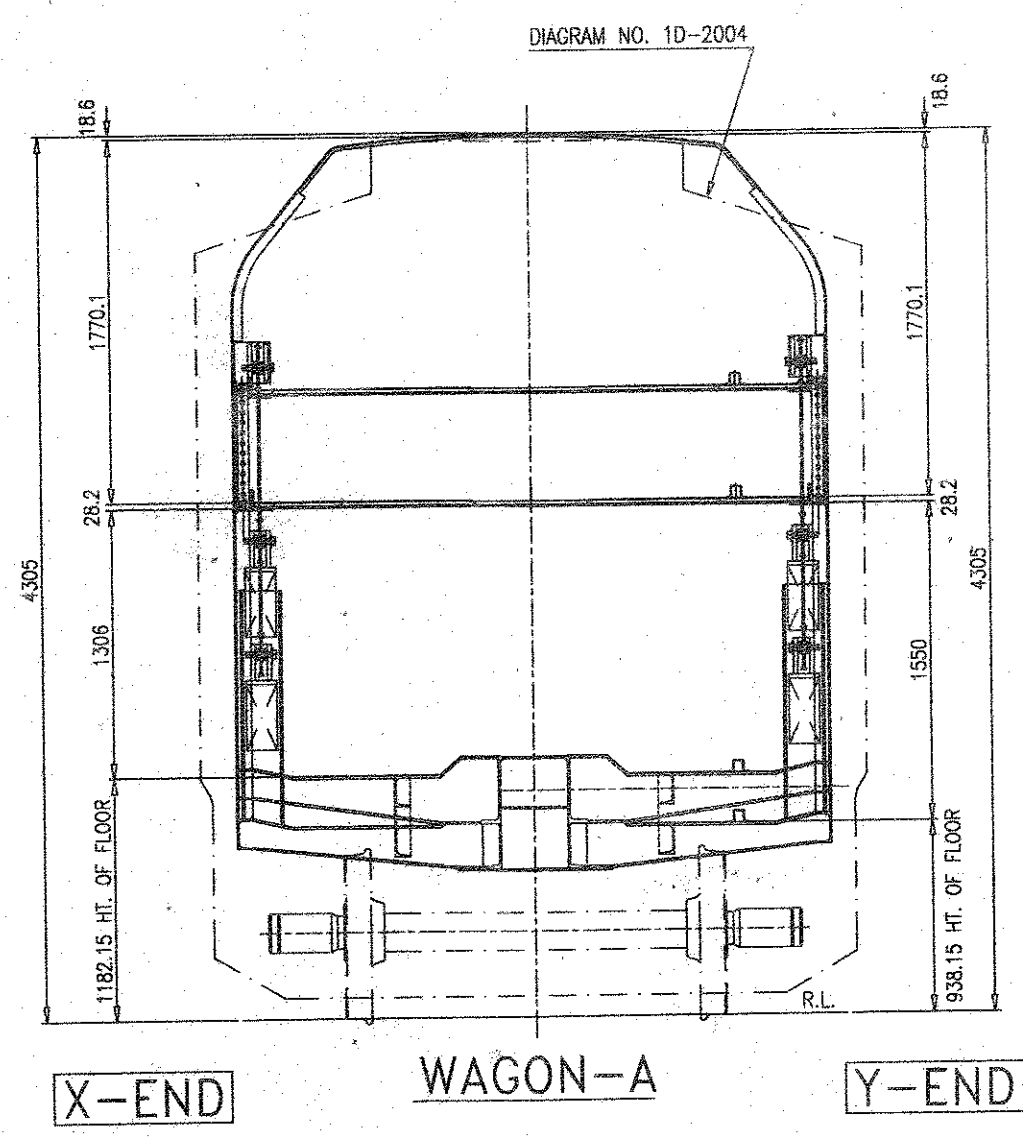


WAGON-A



WAGON-B



S.NO.	SUMMARY OF WEIGHTS (ESTIMATED)	TONNES	
		WAGON-A	WAGON-B
1.	STRUCTURE COMPLETE	19.00	18.70
2.	BALANCING WEIGHT (APPROX.)	2.40	2.40
3.	BRAKES	0.90	0.90
4.	COUPLERS	1.32	1.32
5.	BOGIES	10.30	10.30
6.	TARE	33.92	33.62
7.	PAY LOAD	15.00	15.00
8.	GROSS LOAD	48.92	48.62
9.	AXLE LOAD (WAGON)	12.23	12.16
10.	AXLE LOAD {LCCF-20 (C) BOGIE}	20.32	20.32
11.	TRACK LOADING DENSITY	2.08t/m	2.06t/m
12.	NO. OF WAGONS PER RAKE	06	21

NOTE:-
 1. WAGONS ARE TO BE LOADED FROM END.
 2. THE RAKE WILL HAVE THREE CONSISTS.
 3. EACH CONSIST WILL HAVE TWO NOS. WAGON 'A' AND SEVEN NOS. WAGON 'B'.

SEND WITH REFERENCE TO
 Your Letter No. R.D.S.O. Lucknow/2011
 dated 22.11.11
 & with All No. 1111111111
 For DIRECTOR GENERAL (WAGON)
 R.D.S.O. LUCKNOW-220011
 2/11/11

PRELIMINARY SKETCH

ONLY FOR PROTOTYPE APPLICATION UNDER GUIDANCE OF R.D.S.O. (WAGON)

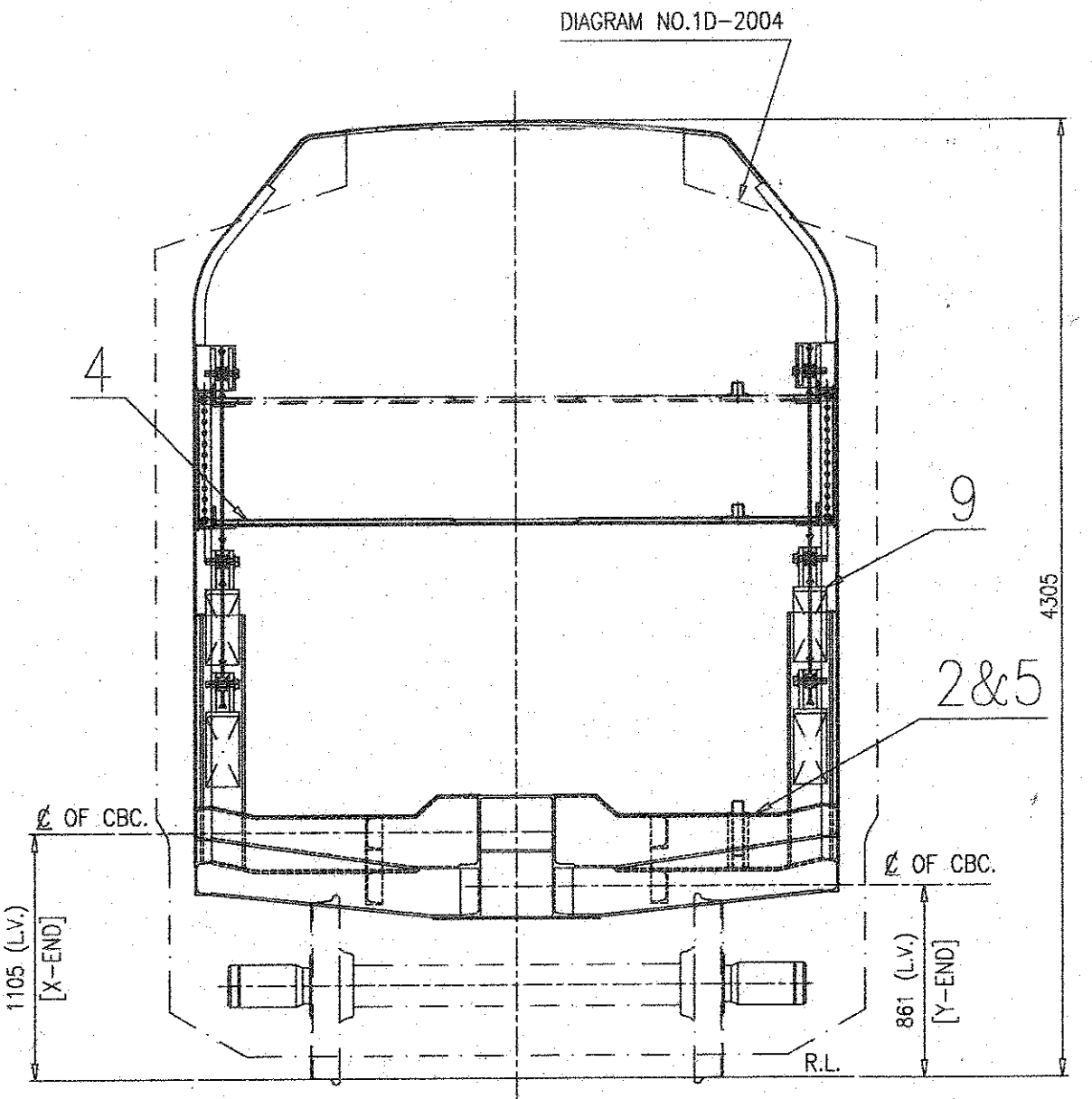
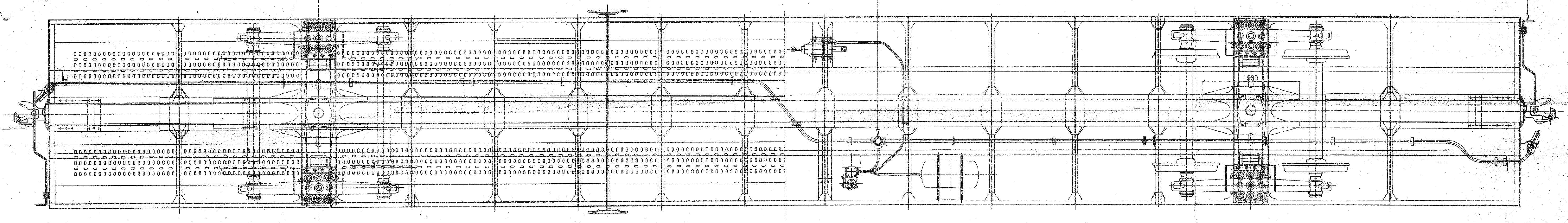
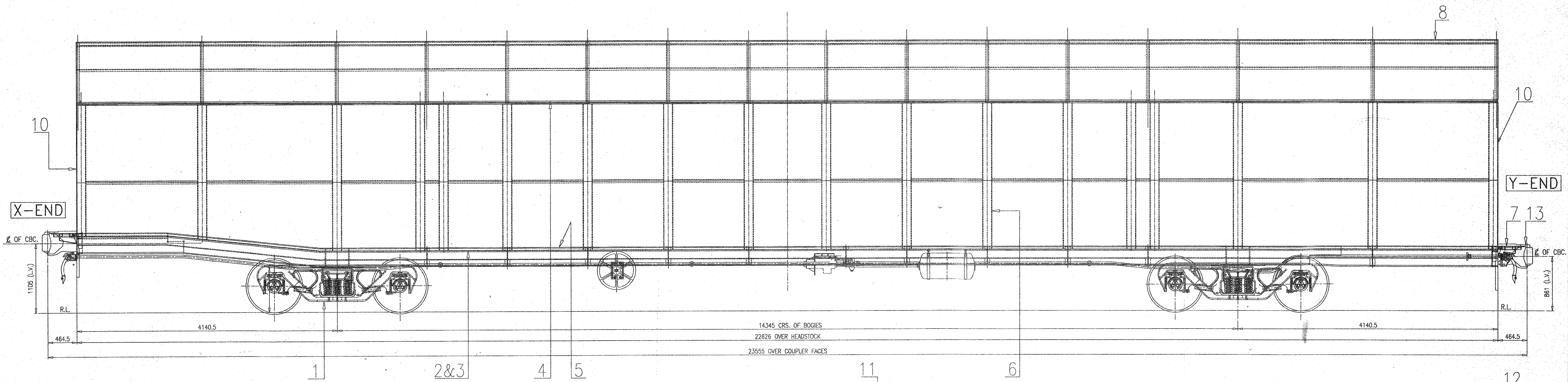
BOGIE COVERED DOUBLE DECKER WAGON TYPE 'BCACBM'

DIAGRAM (WAGON-A & B)

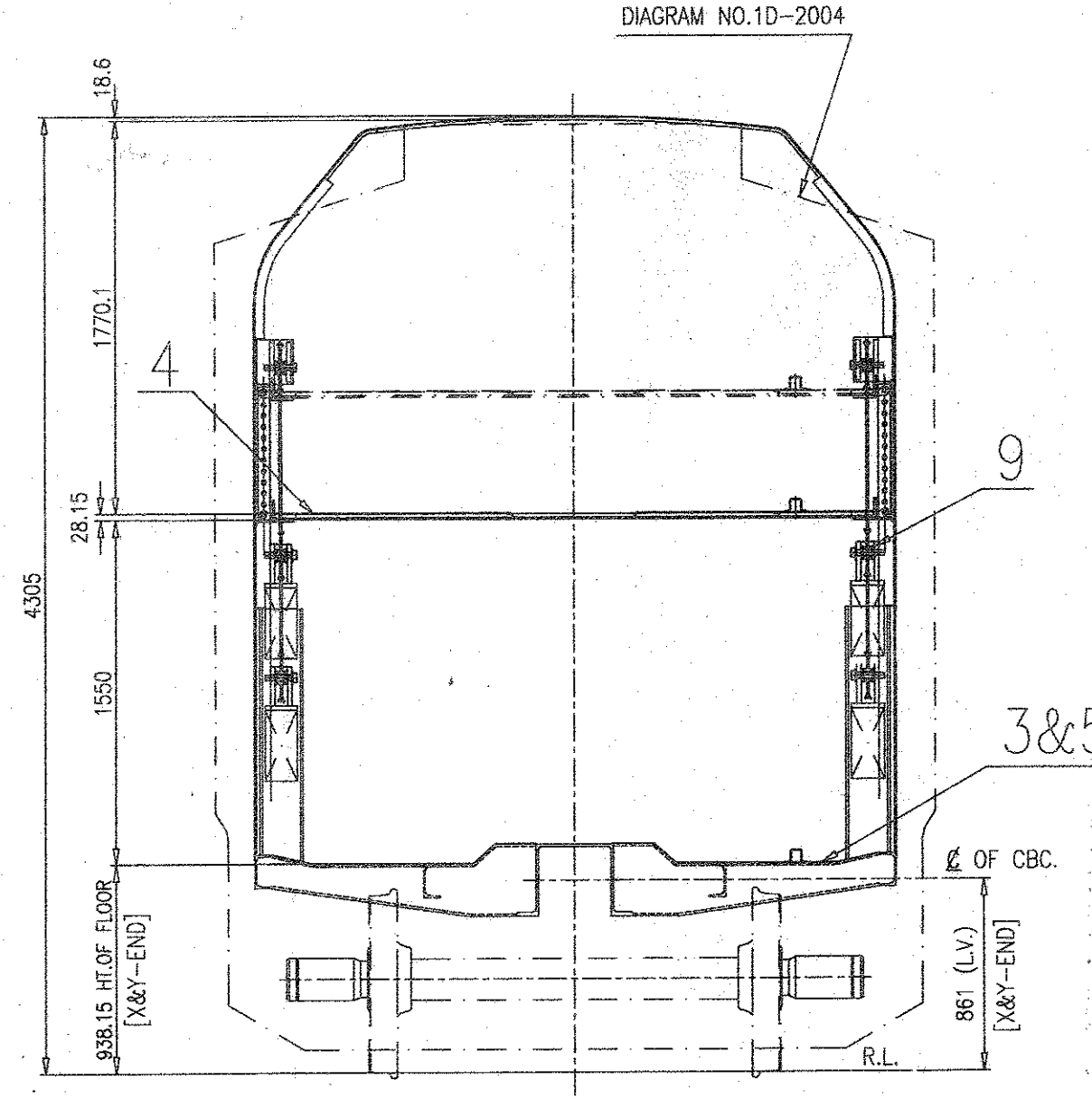
SUPERSEDED BY: [] DATE: []
 SCALE/PASSED: [] DATE: []
 1:25 CHECKED: [] DATE: []
 1:10 DRAWN: [] DATE: []
 TRACED: []
 REPLOTED: []
 J.S.NO. WD-11013/2/11

B.G. R.D.S.O. [W] GROUP WD-11013-S-01

ALT.	ITEM	AUTHY.	DESCRIPTION	DATE	ASSLY. DRGS.



WAGON-A



WAGON-B

- NOTE:-
1. LCCF BOGIE TO SPECIFICATION NO. CONTR-LCCF 20(C)-96.
 2. HIGH TENSILE CBC TO RDSO STR NO. 48-BD-08.
 3. HIGH CAPACITY DRAFT GEAR TO RDSO STR NO. 49-BD-08.
 4. AIR BRAKE EQUIPMENT TO RDSO STR NO. 02-ABR-2002.
 5. AIR BRAKE PIPE AND PIPE JOINTS TO RDSO STR NO. 04-ABR-2002.
 6. EACH CONSIST WILL HAVE TWO NOS. WAGON 'A' AND SEVEN NOS. WAGON 'B'.

ISSUED FOR REFERENCE TO
 Your Letter No. RDSO/RA/2003/2004 dated 12/11/11
 & with all Nos. 2003/11
 For DIRECTOR GENERAL (WAGON)
 R.D.S.O. LUCKNOW-220011
 12/11/11

ITEM	DESCRIPTION	NO. OF PARTS PER WAGON	REF. DRG.	WT. OF ONE(Kg)	MTL.&SPEC	REMARKS
13	CENTRE BUFFER COUPLER ARRANGT.	2	WD-97025-S-35			(WAGON-A&B)
12	UNCOUPLING GEAR ARRANGEMENT	2	WD-11013-S-24			(WAGON-A&B)
11	BRAKE EQUIPMENT LAYOUT	1	WD-11013-S-19&20			(WAGON-A&B)
10	END SWING DOOR ARRGT.	2	WD-11013-S-15			(WAGON-A&B)
9	LIFTING ARRANGEMENT OF UPPER DECK	4	WD-11013-S-14			(WAGON-A&B)
8	ROOF ARRANGEMENT	1	WD-11013-S-13			(WAGON-A&B)
7	END FLAP ARRANGEMENT	4	WD-11013-S-12			(WAGON-A&B)
6	BODY SIDE ARRANGEMENT	2	WD-11013-S-10&11			(WAGON-A&B)
5	FLOOR PLATE ARRANGEMENT(LOWER DECK)	1	WD-11013-S-08			(WAGON-A&B)
4	UPPER DECK FRAME ARRANGEMENT	1	WD-11013-S-05			(WAGON-A&B)
3	LOWER DECK FRAME ARRANGEMENT	1	WD-11013-S-04			(WAGON-B)
2	LOWER DECK FRAME ARRANGEMENT	1	WD-11013-S-03			(WAGON-A)
1	BOGIE GENERAL ARRANGEMENT	2	CONTR-9404-S-02			

PRELIMINARY SKETCH

ONLY FOR PROTOTYPE APPLICATION UNDER GUIDANCE OF R.D.S.O. (WAGON)

BOGIE COVERED DOUBLE DECKER WAGON TYPE 'BCACBM'

SCALE PASSED 1:25 CHECKED 1:10 DRAWN TRACED REPRODUCTION J.S.NO. WD-11013/02/11

DATE 04/11/11

GROUP B.G. R.D.S.O. [W] WD-11013-S-02

ALT.	ITEM	AUTHY.	DESCRIPTION	DATE	ASSLY. DRGS.